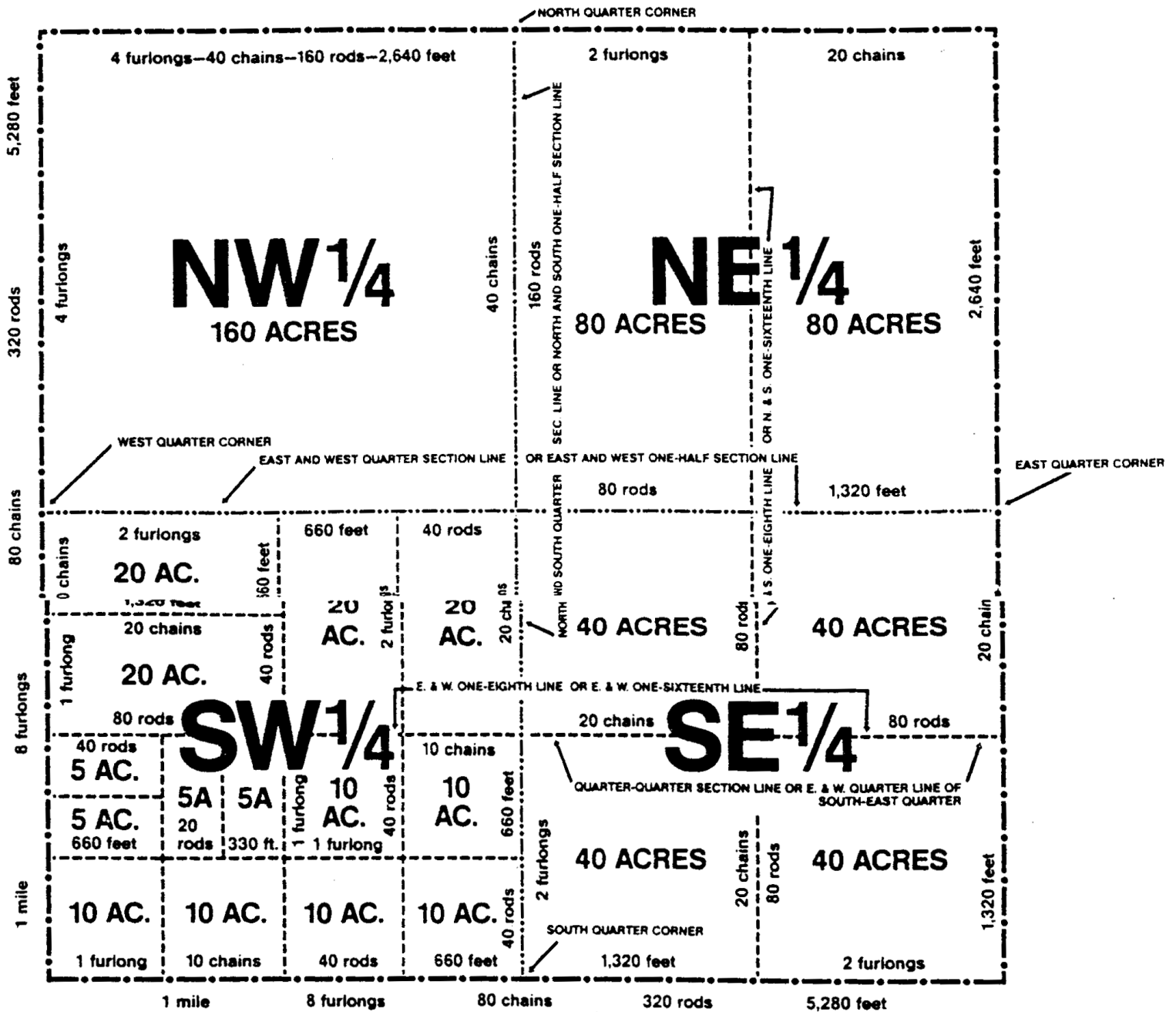


MAP OF SECTION OF LAND SHOWING ACREAGE AND DISTANCES

Section = 1 sq. mile = 640 Acres



- 1 link—7.92 inches
- 1 rod—16½ feet
- 1 chain—4 rods or 66 feet or 100 links
- 1 furlong—660 feet or 40 rods
- 1 mile—8 furlongs or 320 rods or 80 chains or 5,280 feet
- 1 sq. rod—272¼ sq. feet or 30¼ sq. yards
- 1 acre—43,560 sq. feet or 160 sq. rods
- 1 acre is about 208¾ feet square
- 1 acre is 8 rods x 20 rods (or any two numbers of rods whose product is 160)
- 1 section—1 square mile or 640 acres